

Upgrading Smart Tweezers (ST) to Rechargeable Batteries

1. Unscrew 3 screws holding the top ST cover and remove it. Please note that the screw on the tweezers' side is shorter than the other two.
2. Unscrew one more (the shortest) screw at the bottom of ST housing, remove ST main board from the housing and remove the batteries
3. Slide the charger PCB with a ferrite core into the bottom part of the ST housing exactly as shown in Fig. 1 and Fig. 2 .



Fig.1 Insert Charger PCB

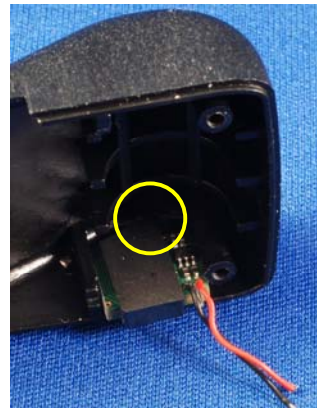


Fig.2 Push Charger PCB deeper

4. The charger PCB should be inserted between the plastic rib on the left and the plastic post on the right. If it jams, realign it and push it deeper into the position shown in Fig. 3.

Warning: push it firmly but gently in order to avoid fragile ferrite core breaking. The ferrite should touch the plastic rib at the bottom of the housing (see encircled area in Fig. 3) as it is shown in Fig. 3 (zoom of the encircled fragment in Fig. 2)

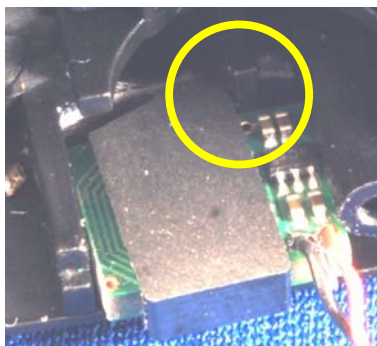


Fig.3 Final position of the Charger PCB

5. Finally the charger PCB should be firmly positioned as shown in Fig. 4.

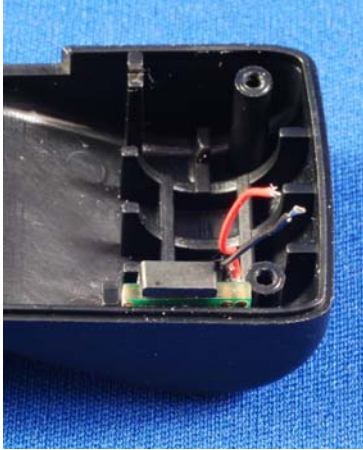


Fig.4 Final position of the Charger PCB

6. Put back the ST board and insert the buzzer into the bottom housing as shown in Fig. 5 and tighten the shortest screw at the bottom of the housing.

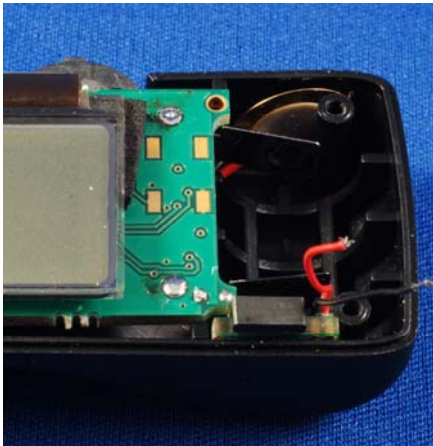


Fig.5 Insert ST main board and adjust position of the buzzer

7. Solder the red and black wires of the charger PCB into the ST board exactly as shown in Fig. 6 in order not to destroy the components on the PCB by wrong voltage source polarity.

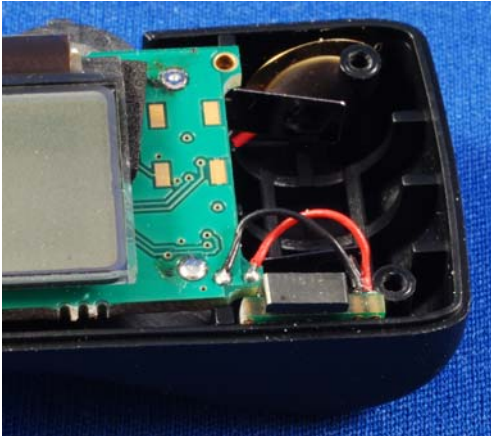


Fig.6 Solder the leads of the Charger PCB

8. Insert the rechargeable batteries as shown in Fig. 7 (watch polarity).

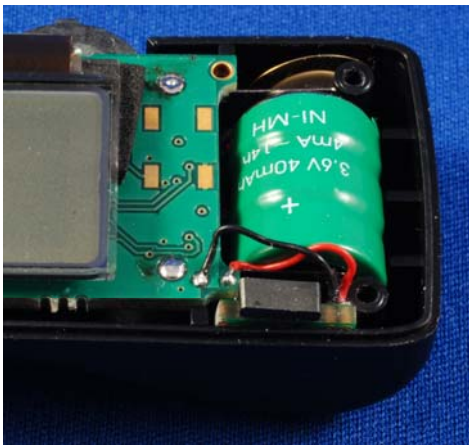


Fig.7 Insert rechargeable batteries

9. Attach the top housing and tighten medium size screw at the tweezers' side and the two remaining screws.
10. Put Smart Tweezers on the Charger Cradle and connect the latter to a power supply.
11. Place modified ST onto the Charger Cradle. The Charger should detect ST presence and enter "Full Charging" mode (Red with blinking Orange for the first release and solid Red for the latest release of the Charger)
12. After sometime (about 4 hours for new batteries) of charging the LED color should turn blinking Orange (solid Green for the latest release) indicating "Trickle Charging" mode.